

# HealthWorks

## Vocational rehabilitation services

Thérèse Lebedis O.B.E.

Consultant AHP (Occupational Therapist) NHS Grampian

Stroke Rehabilitation Lead, National Stroke Improvement Programme

19<sup>th</sup> September 2024



# HealthWorks - NHS Grampian



- Building capacity and capability to embed ‘the work question’ in routine care
- Around 25% of people who have had a stroke were of working age
- Decisions re return to work often made as soon as they have a stroke
- People attempt to return to work too quickly
- People are not always fully realistic about skills required for RTW



# HealthWorks – Key results



## **Awareness training**

604 staff trained across health, social care and 3<sup>rd</sup> sector

Confidence increased

Knowledge increased

Awareness of services increased

Good uptake of resources

## **AHP Advisory Fitness for Work Report training**

206 AHPs trained OT (40%) PT (34%) Podiatry (26%)

Positive impact and confidence in completing the fitness for work report



# HealthWorks – Key results



## Focus groups – key themes

Ask about work as part of assessment process & as required across the pathway

Variable formats needed

What stops us?

- Lack of time and confidence to discuss issues
- Lack of clear processes
- Complexity of cases



# HealthWorks Recommendations



- On line training
- Training offered across organisations & professions
- Develop specialist roles in employability and vocational rehabilitation
- Regular resource updates
- Develop VR pathways

# National Vocational Rehabilitation Group 'Work Ready'

- 1) VR pathways
- 2) Education requirements for VR
- 3) Better use of the 'Health & Work' report, formerly known as 'The AHP Advisory Fitness for work report'.

# Vocational rehabilitation

## Major trauma Team - Joanne MacLeod (OT)

- Case load - patients in the major trauma pathway
- Provide support and education for AHP's in Grampian
- Case management approach - coordinator and educator
- Identifying therapies, 3<sup>rd</sup> sector support or accommodations for specific difficulties
- Highlighting appropriate legislation
- Consider pre vocational activity
- Current developments - Collating/designing assessment tools; outcome measures and return to work tool kits; Return to work signposting resources; Provide in-service and study days
- Contact: **gram.vocationalrehab@nhs.scot**

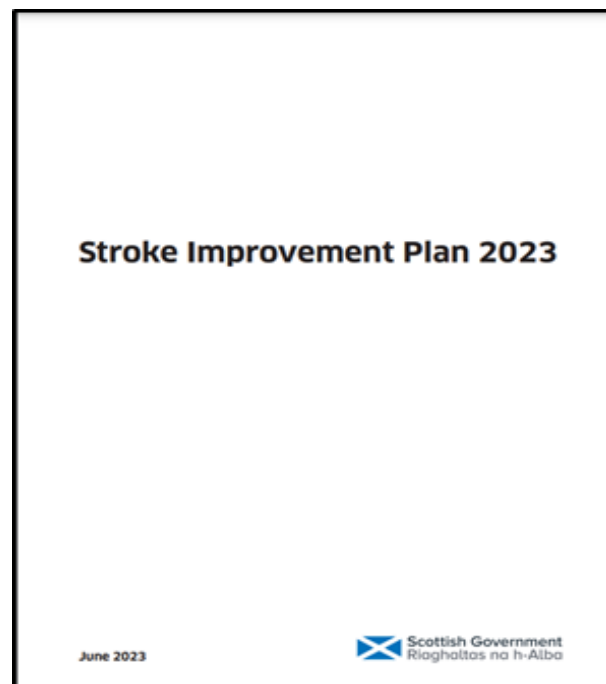
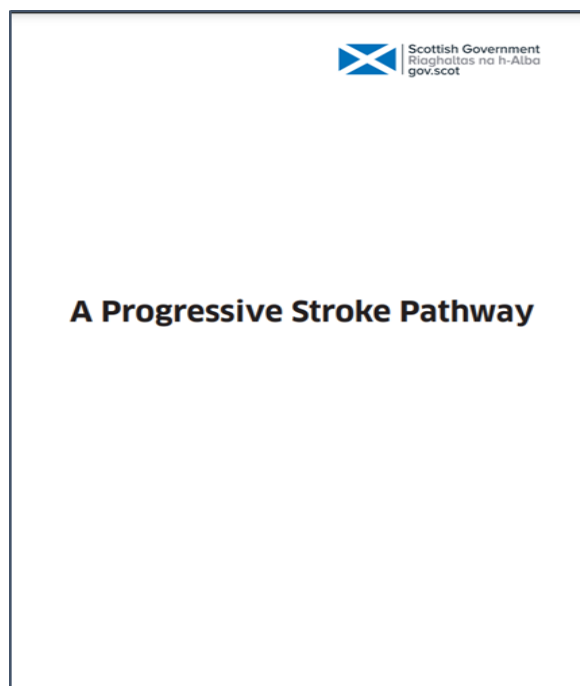
# Occupational Health Services Occupational Therapy - Jill Stott

- Initial 18 month part time contract supporting staff living with long COVID
- Funded by NHS Charities & Captain Tom
- Positive evaluation occupational therapy role in Occupational Health
  - OHS funding for a permanent contract supporting any conditions.
- Case management element with sign posting to services and OT
- VR initial assessment, workplace assessment, fatigue management, anxiety management, sleep hygiene, pain management, etc..
- Work alongside Trauma VR specialist promoting the importance of VR





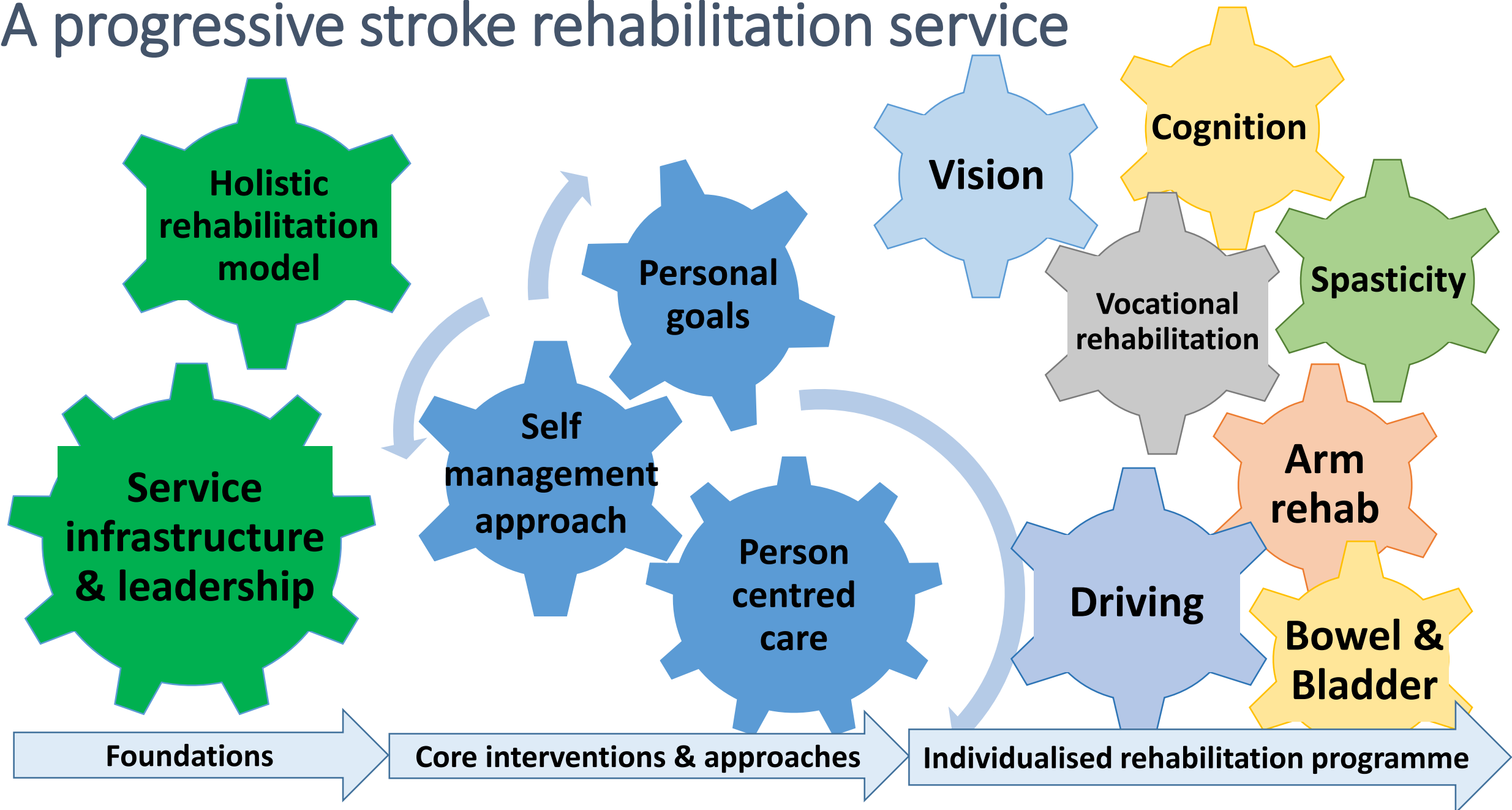
# Programme for Government



[Strokes: progressive stroke pathway - gov.scot \(www.gov.scot\)](http://www.gov.scot)

[Stroke improvement plan 2023 - gov.scot \(www.gov.scot\)](http://www.gov.scot)

# A progressive stroke rehabilitation service



\* with thanks to Dr Lesley Scobbie for this slide format

# Stroke Improvement Plan - RAG report

## 31. Vocational rehabilitation

Boards should be able to demonstrate that the provision of vocational rehabilitation services is embedded in their stroke service by:

**31.1** Demonstrating a documented vocational rehabilitation pathway identifying local and regional access to specialised vocational rehabilitation services.

**31.2** Ensuring that all individuals with vocational rehabilitation needs after a stroke have access to specialised assessment and intervention as required.

**31.3** Ensuring that stroke rehabilitation service identify the work status of all patients.

**31.4** Offering advice, signposting and referral for specialised return to paid work, voluntary work or education/training support.

Criteria fulfilled:

**RED**

There is no evidence that specialised vocational rehabilitation services are available for people who have had a stroke.

**AMBER**

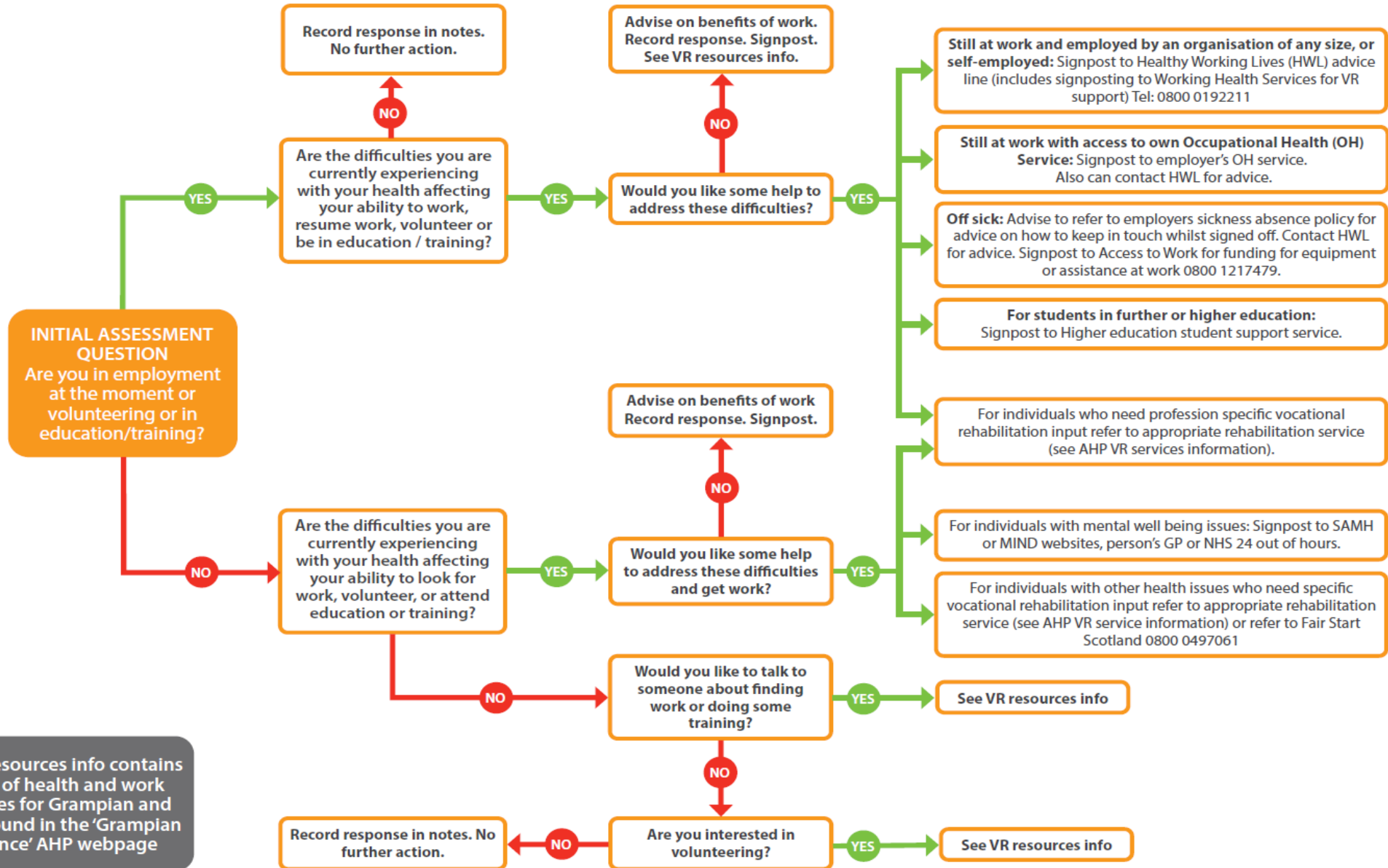
Limited evidence that specialised vocational rehabilitation services are available for people who have had a stroke, with not all criteria being consistently met.

**GREEN**

There is evidence that specialised vocational rehabilitation services are available for people who have had a stroke, meeting all criteria outlined, and are fully embedded into stroke care and being consistently delivered.

# NHS Grampian Vocational Rehabilitation

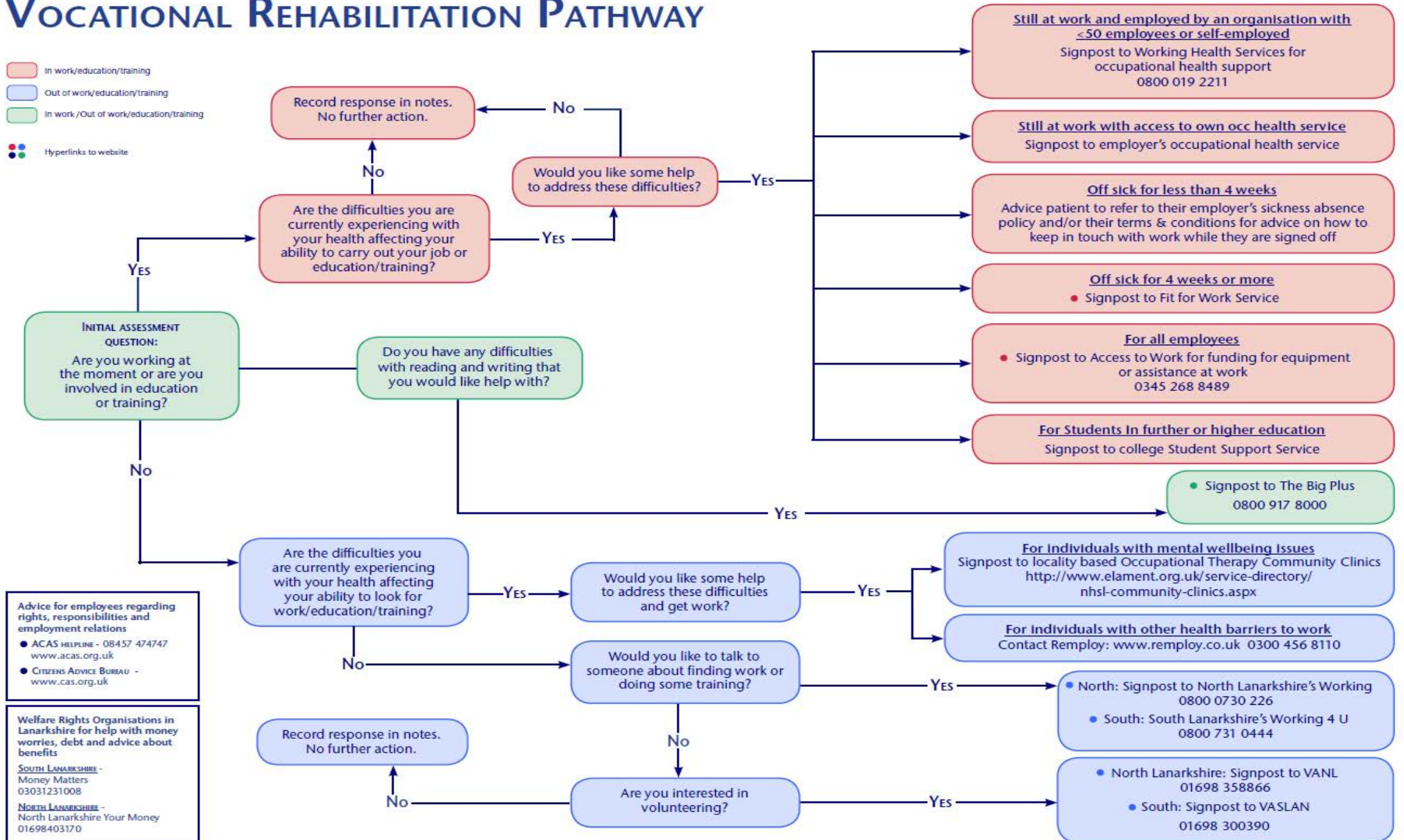
Version 2 - February 2022



The VR resources info contains details of health and work resources for Grampian and can be found in the 'Grampian Guidance' AHP webpage

# VOCATIONAL REHABILITATION PATHWAY

- In work/education/training
- Out of work/education/training
- In work /Out of work/education/training
- Hyperlinks to website



# Stroke Rehabilitation Audit

**Aim** – To develop a stroke rehabilitation bundle  
Focus initially is on key stages of rehabilitation i.e. in-patient / transition to community; longer term care needs

Vocational rehabilitation question.....?

# Thankyou

therese.lebedis@nhs.scot